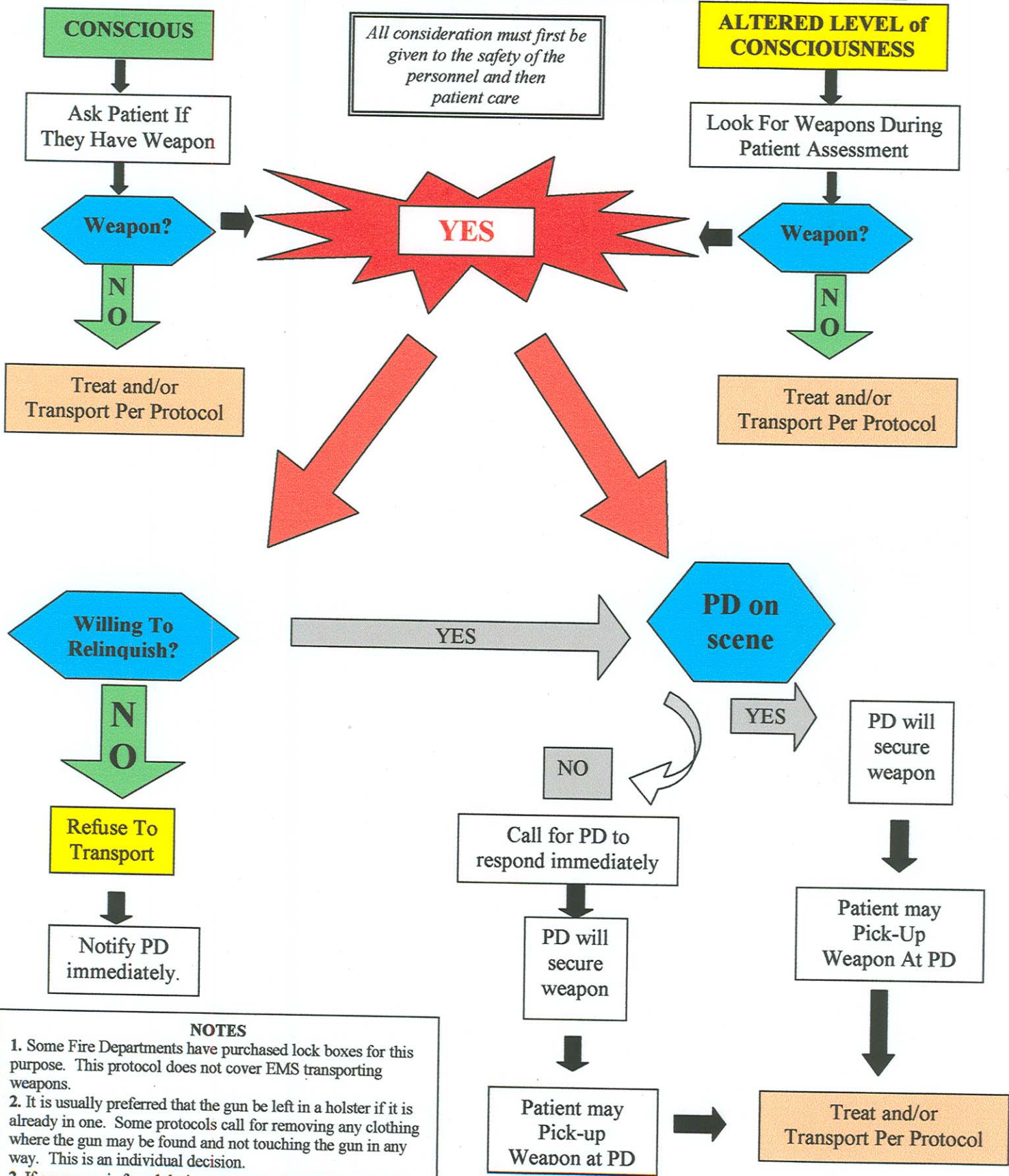


CONCEALED WEAPONS GUIDELINES



- NOTES**
1. Some Fire Departments have purchased lock boxes for this purpose. This protocol does not cover EMS transporting weapons.
 2. It is usually preferred that the gun be left in a holster if it is already in one. Some protocols call for removing any clothing where the gun may be found and not touching the gun in any way. This is an individual decision.
 3. If a weapon is found during transport, the EMS personnel may choose to call ahead and have Hosp. Security meet the squad outside to secure the weapon or you may choose to stop the ambulance and call for police back up